

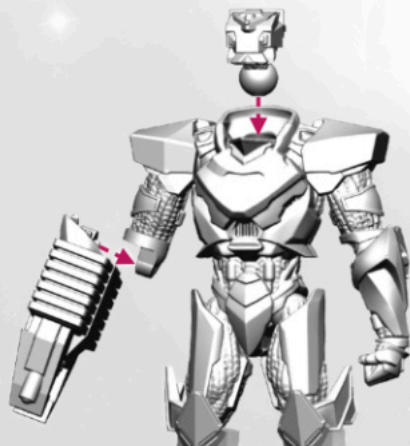
REMNANT MILITUS PRIME & HOLISTA

Preparation: We recommend using sharp clippers to remove parts from the frame. Pulling parts from the sprue without clipping may result in damage to delicate parts. Use a hobby knife, seam scraper or file to remove any mould lines or frame joint nubs left by the clippers.

Assembly: For best results, use superglue (cyanoacrylate), or a rapid-setting epoxy glue to attach resin parts to plastic models. Plastic cement will not work on resin components.

Refer to the main Militus Battlesuit instructions for assembly of the plastic Militus kit.

HOLISTA



PARTS LIST

HOLISTA

Holista Head
Holista Heat Exchange
Remnant Militus Sprue
MEBS06 - 46mm Round Base

PRIME

Prime Head
Phase Sword Hand
Remnant Militus Sprue
MEBS06 - 46mm Round Base

PRIME

