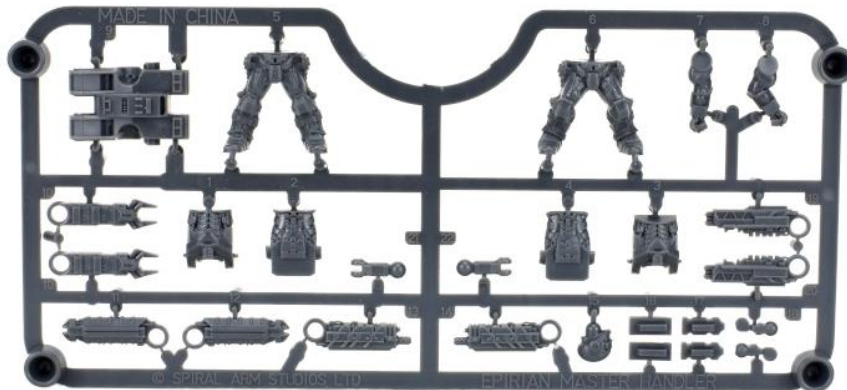


Epirian SecDef Field Commander



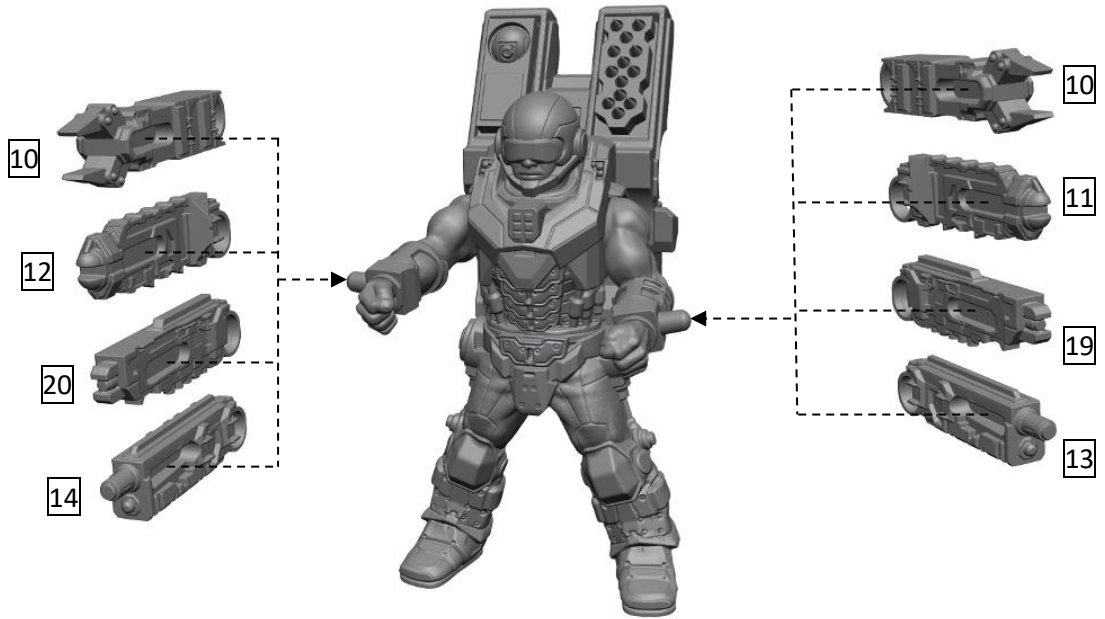
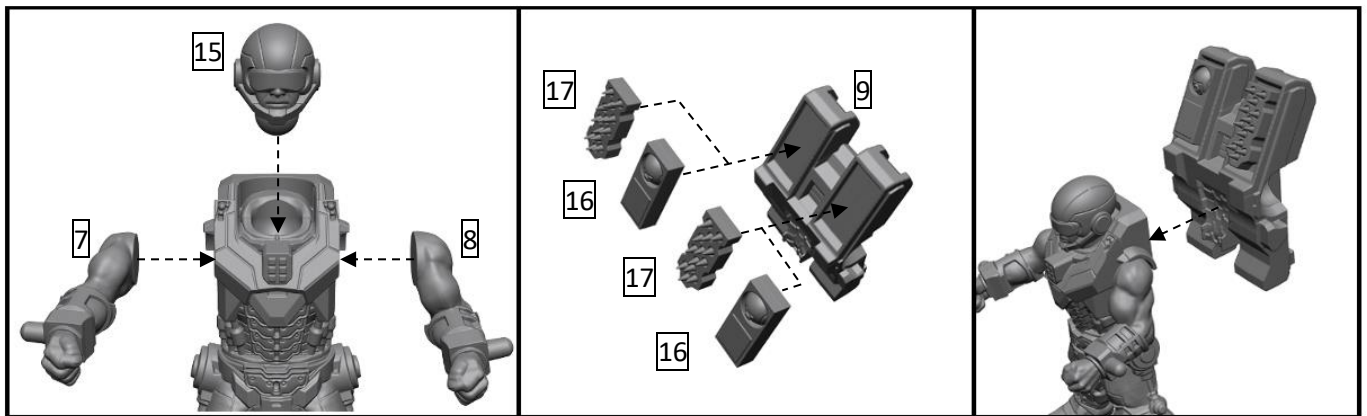
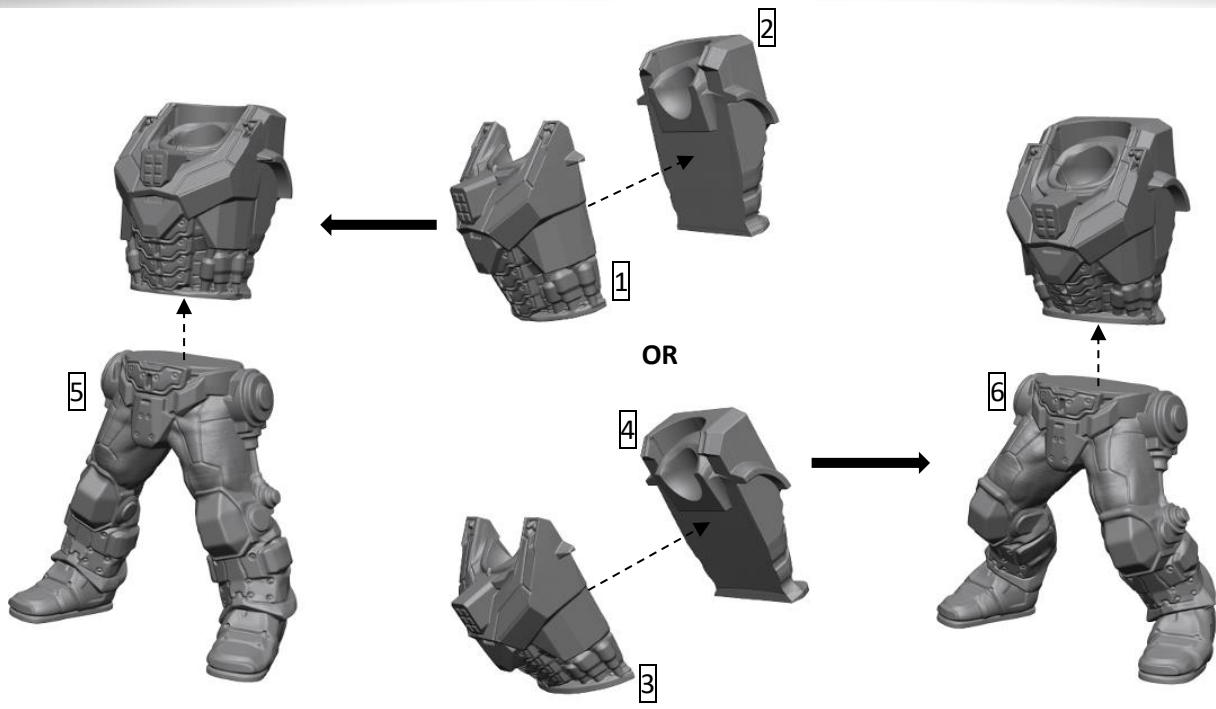
Preparation: We recommend using sharp clippers to remove parts from the frame. Pulling parts from the sprue without clipping may result in damage to delicate parts.

Assembly: For best results, use plastic glue (polystyrene cement).



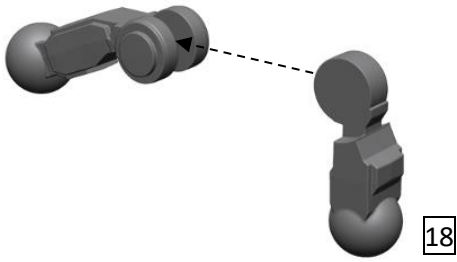
PARTS LIST

1	Torso Front #1	9	Backpack	17	Cluster Missile Pod (x2)
2	Torso Rear #1	10	Hydraulic Fist (x2)	18	Weapon Arm Lower (x2)
3	Torso Front #2	11	Flakk Gun Left	19	Laser Left
4	Torso Rear #2	12	Flakk Gun Right	20	Laser Right
5	Legs #1	13	Machine Gun Left	21	Weapon Arm Upper
6	Legs #2	14	Machine Gun Right	22	Weapon Arm Upper
7	Right Arm	15	Head		
8	Left Arm	16	Targeting System (x2)		



Maelstrom's Edge Model Assembly Guide: Epirian SecDef Field Commander

21



22

