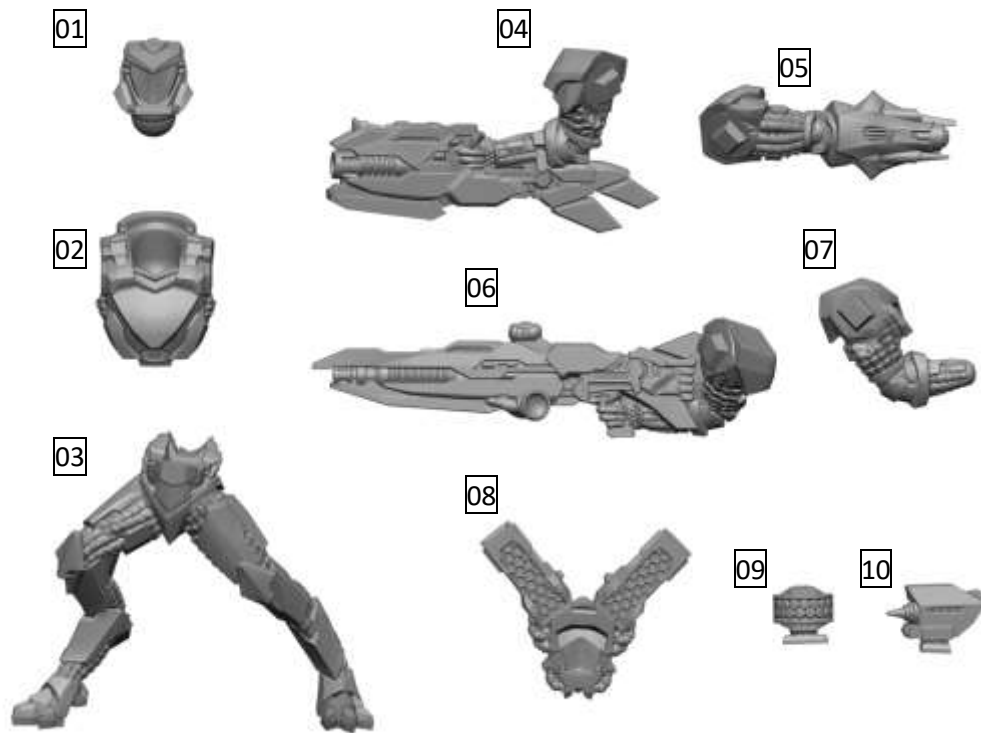


Remnant Nimbus Battle Suit



PARTS LIST

From Militus Sprue (optional)

01	Head	06	Sniper Rifle Arm	M01-12	Militus Heads
02	Torso	07	Sniper Left Arm	M13	Aerial (for head M07)
03	Legs	08	Cloak Generator	M15	Boostpack
04	Incursion Blaster Arm	09	Hologram Projector	ML18	Left Jet Front
05	Pinpoint Scanner Arm	10	Thermal Tracker	ML19	Left Jet Nozzle
				ML15	Right Jet Front
	45mm base (not pictured)			MR16	Right Jet Nozzle

Preparation: Prior to assembly, we recommend washing resin models in warm, soapy water to remove any mould release residue.

Assembly: Do not use plastic cement. We recommend superglue or quick-setting epoxy.

