

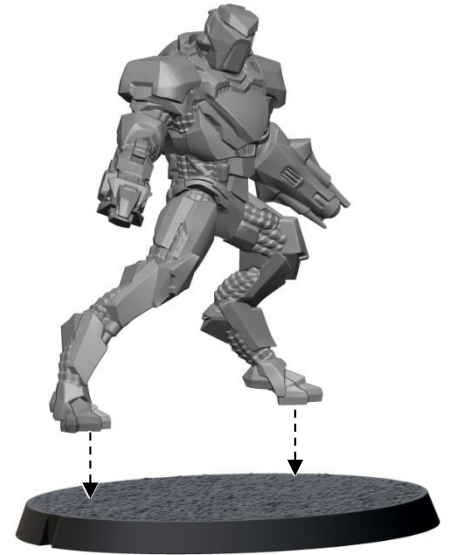
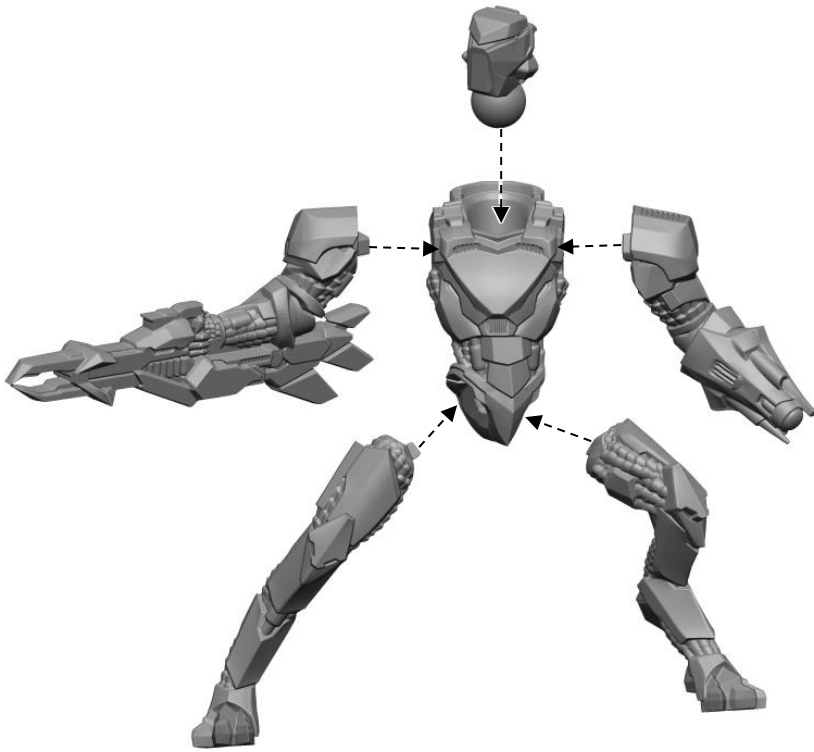
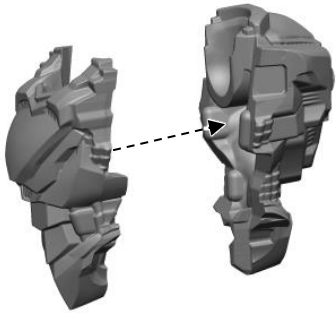
Artarian Remnant Nimbus Pathfinder

Preparation: We recommend using sharp clippers to remove parts from the frame, in order to avoid damage to delicate parts.

Assembly: For best results, use plastic glue (polystyrene cement).

PARTS LIST

B1	Torso Front
B2	Torso Rear
B3	Left Arm with Pinpoint Scanner
B4	Right Arm with Arc Splitter
B5	Head
B6	Right Leg
B7	Left Leg
	MEBS05 - 40mm Base



Boostpack from
Remnant Militus kit